

**(SVHC)**

CANEC23009890202

2023 09 21

1

13



(SVHC)

1.

<http://echa.europa.eu/web/guest/candidate-list-table>

2. REACH

2.1

1907/2006 EC 33 57 59  
0.1%

1907/2006 EC 57  
59 (a) 1 / / 7 4 (b)  
0.1%

2021 SVHC 1 5 0.1% w/w  
SCIP 2008/98/EC ECHA

2.2

SVHC

31 1907/2006 REACH

2.3

0.1% (w/w) / 1272/2008 CLP  
1907/2006 REACH

(SDS)

- 1272/2008 CLP
- 1272/2008 CLP
- 1272/2008 CLP ;
- 1272/2008 CLP

(a) 0.2 1 (w/w)

(b) PBT vPvB 0.1 (w/w)

(c) 0.1

(w/w)

(d)





(SVHC)

CANEC23009890202

2023 09 21

3 13

| ID  |  | ID | SGS ID                  |
|-----|--|----|-------------------------|
| 001 |  | A1 | CAN23-0098902-0001.C001 |

SGS

ICP-OES UV-VIS GC-MS HPLC-DAD/MS



Unless otherwise agreed in writing, this document is issued by the Company subject to its General Conditions of Service printed overleaf available on request or access.





CANEC23009890202

2023 09 21

4 13

(SVHC)

|   |      | CAS No. | 001 (%) | RL (%) |
|---|------|---------|---------|--------|
| - | SVHC | -       | ND      | -      |

**SVHC**

|   |      | CAS No. | 001 (%) | RL (%) |
|---|------|---------|---------|--------|
| / | SVHC | -       | ND      | -      |



Unless otherwise agreed in writing, this document is issued by the Company subject to its General Conditions of Service printed overleaf available on request or access.

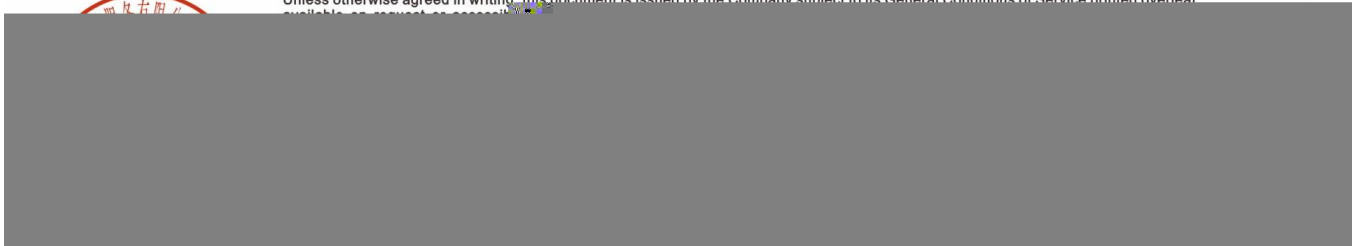




(SVHC)

## SVHC:

|     |    |                                       | CAS No.                                | RL (%) |
|-----|----|---------------------------------------|--|--------|
| I   | 1  | 4,4'- (MDA)                           | 101-77-9                               | 0.050  |
| I   | 2  | 2,4,6- -5- ( )                        | 81-15-2                                | 0.050  |
| I   | 3  | C10-13 ( )                            | 85535-84-8                             | 0.050  |
| I   | 4  |                                       | 120-12-7                               | 0.050  |
| I   | 5  | (BBP)                                 | 85-68-7                                | 0.050  |
| I   | 6  | (2- ) (DEHP)                          | 117-81-7                               | 0.050  |
| I   | 7  | (TBTO)                                | 56-35-9                                | 0.050  |
| I   | 8  | *                                     | 7646-79-9                              | 0.005  |
| I   | 9  | *                                     | 1303-28-2                              | 0.005  |
| I   | 10 | *                                     | 1327-53-3                              | 0.005  |
| I   | 11 | (DBP)                                 | 84-74-2                                | 0.050  |
| I   | 12 | (HBCDD) ( -<br>HBCDD, -HBCDD, -HBCDD) | -                                      | 0.050  |
| I   | 13 | *                                     | 7784-40-9                              | 0.005  |
| I   | 14 | *                                     | 10588-01-9<br>/7789-12-0               | 0.005  |
| I   | 15 | *                                     | 15606-95-8                             | 0.005  |
| II  | 16 | 2,4-                                  | 121-14-2                               | 0.050  |
| II  | 17 |                                       | 79-06-1                                | 0.050  |
| II  | 18 | **                                    | 90640-80-5                             | 0.050  |
| II  | 19 | **                                    | 90640-81-6                             | 0.050  |
| II  | 20 | **                                    | 91995-15-2                             | 0.050  |
| II  | 21 | **                                    | 91995-17-4                             | 0.050  |
| II  | 22 | **                                    | 90640-82-7                             | 0.050  |
| II  | 23 |                                       | 84-69-5                                | 0.050  |
| II  | 24 | (C.I. 104)*                           | 12656-85-8                             | 0.005  |
| II  | 25 | *                                     | 7758-97-6                              | 0.005  |
| II  | 26 | (C.I. 34)*                            | 1344-37-2                              | 0.005  |
| II  | 27 | **                                    | 65996-93-2                             | 0.050  |
| II  | 28 | (2- )                                 | 115-96-8                               | 0.050  |
| III | 29 | *                                     | 7789-09-5                              | 0.005  |
| III | 30 | *                                     | -                                      | 0.005  |
| III | 31 | *                                     | 12179-04-3<br>/1303-96-4<br>/1330-43-4 | 0.005  |
| III | 32 | *                                     | 7789-00-6                              | 0.005  |
| III | 33 | *                                     | 7778-50-9                              | 0.005  |
| III | 34 | *                                     | 7775-11-3                              | 0.005  |





CANEC23009890202

2023 09 21

6 13

(SVHC)

|    |    |                      | CAS No.    | RL (%) |
|----|----|----------------------|------------|--------|
| IV | 38 |                      | 109-86-4   | 0.050  |
| IV | 39 | , , *                | -          | 0.005  |
| IV | 40 | *                    | 1333-82-0  | 0.005  |
| IV | 41 | *                    | 513-79-1   | 0.005  |
| IV | 42 | *                    | 71-48-7    | 0.005  |
| IV | 43 | *                    | 10141-05-6 | 0.005  |
| IV | 44 | *                    | 10124-43-3 | 0.005  |
| V  | 45 | 1,2,3-               | 96-18-4    | 0.050  |
| V  | 46 | 1,2- - (C6-8 ) ( C7) | 71888-89-6 | 0.050  |
| V  | 47 | 1,2- - (C7-11 ) ( )  | 68515-42-4 | 0.050  |
| V  | 48 | 1- -2-               | 872-50-4   | 0.050  |



Unless otherwise agreed in writing, this document is issued by the Company subject to its General Conditions of Service printed overleaf available on request or access.



CANEC23009890202

2023 09 21

7

13



(SVHC)

|      |     |      | CAS No.          | RL (%) |
|------|-----|------|------------------|--------|
| VIII | 116 | *    | 1317-36-8        | 0.005  |
| VIII | 117 | *    | 12036-76-9       | 0.005  |
| VIII | 118 | *    | 1314-41-6        | 0.005  |
| VIII | 119 | *    | 12060-00-3       | 0.005  |
| VIII | 120 | *    | 12626-81-2       | 0.005  |
| VIII | 121 |      | 625-45-6         | 0.050  |
| VIII | 122 | 1,2- | 75-56-9          | 0.050  |
| VIII | 123 | N,N- | 68-12-2          | 0.050  |
| VIII | 124 | N-   | 79-16-3          | 0.050  |
| VIII | 125 |      | 776297-69-9      | 0.050  |
| VIII | 126 | -    | 97-56-3          | 0.050  |
| VIII | 127 | 2-   | 95-53-4          | 0.050  |
| VIII | 128 |      | 72629-94-8       | 0.050  |
| VIII | 129 | *    | 12065-90-6       | 0.005  |
| VIII | 130 | *    | 8012-00-8        | 0.005  |
| VIII | 131 | *    | 68784-75-8       | 0.005  |
| VIII | 132 | *    | 11120-22-2       | 0.005  |
| VIII | 133 | *    | 62229-08-7       | 0.005  |
| VIII | 134 | *    | 78-00-2          | 0.005  |
| VIII | 135 | *    | 122076 0 g0 G[(- |        |







CANEC23009890202

2023 09 21

9 13

(SVHC)

|      |     |  | CAS No.                | RL (%) |
|------|-----|--|------------------------|--------|
| XII  | 157 | 2- -2- -4,6- (UV-320)  | 3846-71-7              | 0.050  |
| XII  | 158 | - (2- ) (DOTE)   | -                      | 0.050  |
| XII  | 159 | *  | 7790-79-6              | 0.005  |
| XII  | 160 | *  | 10124-36-4 /31119-53-6 | 0.005  |
| XII  | 161 | - (2- ) (DOTE)<br>- (2- ) (MOTE)   | -                      | 0.050  |
| XIII | 162 | 1,2- , (C6-10) / 1,2- ,<br>0.3   | -                      | 0.050  |
| XIII | 163 | 5- -2-(2,4- -3- -1- )-5-<br>-1,3- [1] 5-1/4 ; -2-(4,6-<br>-3- -1- )-5- -1,3- [2] [1] |                        | 0.000  |
| XIV  | 164 | 1,3-   | 1120-                  |        |



(SVHC)

|       |     |                                    | CAS No.     | RL (%) |
|-------|-----|------------------------------------|-------------|--------|
| XIX   | 187 | (D6)                               | 540-97-6    | 0.050  |
| XIX   | 188 | (EDA)                              | 107-15-3    | 0.050  |
| XIX   | 189 |                                    | 7439-92-1   | 0.005  |
| XIX   | 190 | (D4)                               | 556-67-2    | 0.050  |
| XIX   | 191 |                                    | 61788-32-7  | 0.050  |
| XX    | 192 | 1,7,7- -3-( ) [2.2.1] -2-<br>(3- ) | 15087-24-8  | 0.050  |
| XX    | 193 | 4,4'-(1,3- ) (1,3-DMBBP)           | 6807-17-6   | 0.050  |
| XX    | 194 | (k) (BkF)                          | 207-08-9    | 0.050  |
| XX    | 195 | (FLT)                              | 206-44-0    | 0.050  |
| XX    | 196 | (PHE)                              | 85-01-8     | 0.050  |
| XX    | 197 | (PYR)                              | 129-00-0    | 0.050  |
| XXI   | 198 | 2,3,3,3- -2-( )<br>( ) (HFPO-DA)   | -           | 0.050  |
| XXI   | 199 | 2-                                 | 110-49-6    | 0.050  |
| XXI   | 200 | 4- (PTBP)                          | 98-54-4     | 0.050  |
| XXI   | 201 | (4- )<br>(TNPP)( 0.1% 4- )         | -           | 0.050  |
| XXII  | 202 | 2- -2- -4'-                        | 119313-12-1 | 0.050  |
| XXII  | 203 | 2- -1-(4- )-2- -1-                 | 71868-10-5  | 0.050  |
| XXII  | 204 |                                    | 71850-09-4  | 0.050  |
| XXII  | 205 |                                    | -           | 0.050  |
| XXIII | 206 | 1-                                 | 1072-63-5   | 0.050  |
| XXIII | 207 | 2-                                 | 693-98-1    | 0.050  |
| XXIII | 208 |                                    | 94-26-8     | 0.050  |
| XXIII | 209 | ( ) **                             | 22673-19-4  | 0.050  |
| XXIV  | 210 |                                    | 143-24-8    | 0.050  |



CANEC23009890202

2023 09 21

11 13

(SVHC)

|      |     |                  | CAS No. | RL (%) |
|------|-----|------------------|---------|--------|
| XXVI | 222 | S-([5.2.1.0'2,6] |         |        |

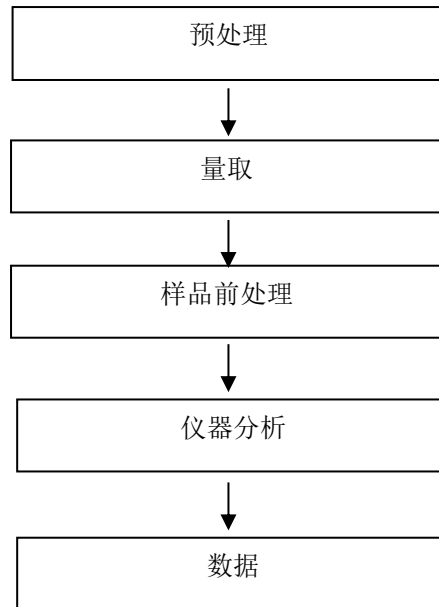


Unless otherwise agreed in writing, this document is issued by the Company subject to its General Conditions of Service printed overleaf available on request or access.





(SVHC)





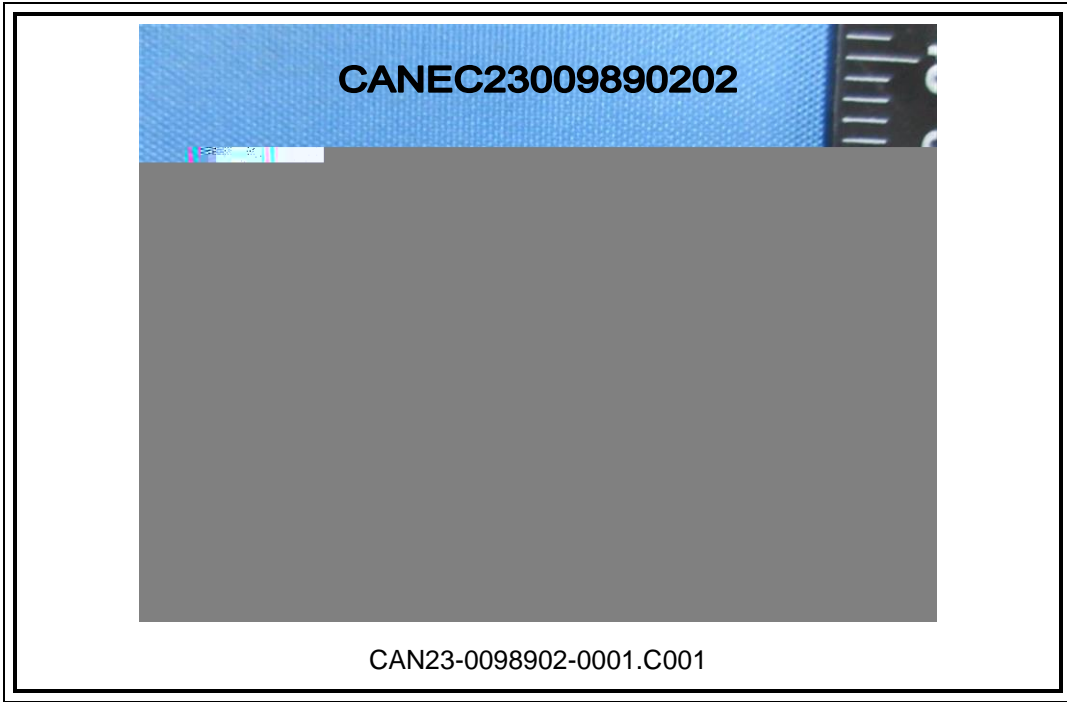
CANEC23009890202

2023 09 21

13

13

(SVHC)



SGS

\*\*\*

\*\*\*



Unless otherwise agreed in writing, this document is issued by the Company subject to its General Conditions of Service printed overleaf available on request or access.

