

(SVHC)

CANEC24022808802

2024 10 23

1

14

15

LED

SGS

GZP24-033548

2024 10 16

2024 10 16 ~ 2024 10 23

(i) (2024 6 27 REACH) 241 (SVHC)

(i) (2024 8 30 REACH) 6 (SVHC)

(ii) 2 (SVHC)

(iii) REACH) 6 (SVHC) (1907/2006

REACH	241	SVHC	0.1%	
(w/w)				



Jessie-JX Li

scan to see the report



Unless otherwise agreed in writing, this is the property of SGS



CANEC24022808802

2024 10 23

2

14

(SVHC)

REACH 14	SVHC	0.1% (w/w)	
-------------	------	------------	--

(SVHC)

1.

<http://echa.europa.eu/web/guest/candidate-list-table>

2. REACH

2.1

1907/2006 EC	33	57	59
0.1%			

59	1907/2006 EC		7	4	57
(a)		1 / /			(b)
		0.1%			

2021 SVHC	1	5		0.1%	w/w
			2008/98/EC		

(SVHC)

CANEC24022808802

2024 10 23

4

14

ID		ID	
A1	" LED"	-	-

ID		ID	SGS ID
001	" LED"	A1	CAN24-0228088-0001.C001

SGS

ICP-OES UV-VIS GC-MS HPLC-DAD/MS

(SVHC)

SVHC

		CAS No.	001 (%)	RL (%)
-	SVHC	-	ND	-

SVHC

		CAS No.	001 (%)	RL (%)
/	SVHC	-	ND	-

- (1) SVHC RL SVHC SVHC
- (2) RL = (RL RL)
- ND = (RL) ND SVHC
- (3) *
- **

(SVHC)

SVHC:

			CAS No.	RL (%)
I	1	4,4'- (MDA)	101-77-9	0.050
I	2	2,4,6- -5- ()	81-15-2	0.050
I	3	C10-13 ()	85535-84-8	0.050
I	4		120-12-7	0.050
I	5	(BBP)	85-68-7	0.050
I	6	(2-) (DEHP)	117-81-7	0.050
I	7	(TBTO)	56-35-9	0.050
I	8	*	7646-79-9	0.005
I	9	*	1303-28-2	0.005
I	10	*	1327-53-3	0.005
I	11	(DBP)	84-74-2	0.050
I	12	(HBCDD) HBCDD, -HBCDD, -HBCDD) (-	-	0.050
I	13	*	7784-40-9	0.005
I	14	*	10588-01-9 /7789-12-0	0.005
I	15	*	15606-95-8	0.005
II	16	2,4-	121-14-2	0.050
II	17	**	90640-80-5	0.050
II	18	**	90640-81-6	0.050
II	19	**	91995-15-2	0.050
II	20	**	91995-17-4	0.050
II	21	**	90640-82-7	0.050
II	22		84-69-5	0.050
II	23	*	7758-97-6	0.005
II	24	(C.I. 104)*	12656-85-8	0.005
II	25	(C.I. 34)*	1344-37-2	0.005
II	26	**	65996-93-2	0.050
II	27	(2-)	115-96-8	0.050
II	28		79-06-1	0.050
III	29	*	7789-09-5	0.005
III	30	*	-	0.005
III	31	*	12179-04-3 /1303-96-4 /1330-43-4	0.005
III	32	*	7789-00-6	0.005
III	33	*	7778-50-9	0.005
III	34	*	7775-11-3	0.005
III	35	*	12267-73-1	0.005
III	36		79-01-6	0.050
IV	37		110-80-5	0.050

Unless otherwise agreed in writing, this is a confidential document.

(SVHC)

			CAS No.	RL (%)
IV	38		109-86-4	0.050
IV	39	, , *	-	0.005
IV	40	*	1333-82-0	0.005
IV	41	*	513-79-1	0.005
IV	42	*	71-48-7	0.005
IV	43	*	10141-05-6	0.005
IV	44	*	10124-43-3	0.005
V	45	1,2,3-	96-18-4	0.050
V	46	1,2- - (C6-8) (C7)	71888-89-6	0.050
V	47	1,2- - (C7-11) ()	68515-42-4	0.050
V	48	1- -2-	872-50-4	0.050
V	49		111-15-9	0.050
V	50		302-01-2 /7803-57-8	0.050
V	51	*	7789-06-2	0.005
VI	52	1,2-	107--	

(SVHC)

			CAS No.	RL (%)
VII	79		75-12-7	0.050
VII	80	*	17570-76-2	0.005
VII	81	N,N,N',N'- 4,4'- ()	101-61-1	0.050
VII	82	1,3,5- ()-1,3,5- 2,4,6-(1H, 3H,5H)- (TGIC)	2451-62-9	0.050
VII	83	C.I. 4§	6786-83-0	0.050
VII	84	1,3,5- -[(2S 2R)-2,3-]-1,3,5- - 2,4,6-(1H, 3H, 5H)- (-TGIC)	59653-74-6	0.050
VIII	85	*	69011-06-9	0.005
VIII	86	1,2- - ()	84777-06-0	0.050
VIII	87		629-14-1	0.050
VIII	88	1-	106-94-5	0.050
VIII	89	3- -2- -2-(3-)-1,3-	143860-04-2	0.050
VIII	90		-	0.050
VIII	91	4,4'- -3,3'-	838-88-0	0.050
VIII	92	4,4'-	101-80-4	0.050
VIII	93	4-	60-09-3	0.050
VIII	94	2,4-	95-80-7	0.050
VIII	95	4- ()	-	0.050
VIII	96	2- -5-	120-71-8	0.050
VIII	97	*	51404-69-4	0.005
VIII	98	4-	92-67-1	0.050
VIII	99	(DecaBDE)	1163-19-5	0.050
VIII	100	-1,2- , - -1,2-	-	0.050
VIII	101		123-77-3	0.050
VIII	102	(DBTC)	683-18-1	0.050
VIII	103		64-67-5	0.050
VIII	104		605-50-5	0.050
VIII	105		77-78-1	0.050
VIII	106		88-85-7	0.050
VIII	107	() *	12578-12-0	0.005
VIII	108	C16-18- *	91031-62-8	0.005
VIII	109		110-00-9	0.050
VIII	110		2058-94-8	0.050
VIII	111		376-06-7	0.050
VIII	112	, 1- ,4- ,3-	-	0.050
VIII	113	*	13814-96-5	0.005
VIII	114	*	20837-86-9	0.005
VIII	115	*	10099-74-8	0.005

CANEC24022808802

(SVHC)

			CAS No.	RL (%)
XII	157	2- -2- -4,6- (UV-320)	3846-71-7	0.050
XII	158	- (2-) (DOTE)	15571-58-1	0.050
XII	159	*	7790-79-6	0.005
XII	160	*	10124-36-4 /31119-53-6	0.005
XII	161	- (2-) (DOTE) - (2-) (MOTE)	-	0.050
XIII	162	1,2- , (C6-10) / 1,2- , 0.3 5- -2-(2,4- -3- -1-	-	0.050
XIII	163			

(SVHC)

			CAS No.	RL (%)
XIX	187	(D6)	540-97-6	0.050
XIX	188	(EDA)	107-15-3	0.050
XIX	189		7439-92-1	0.005
XIX	190	(D4)	556-67-2	0.050
XIX	191		61788-32-7	0.050
XX	192	1,7,7- -3-() [2.2.1] -2- (3-)	15087-24-8	0.050
XX	193	4,4'-(1,3-) (1,3-DMBBP)	6807-17-6	0.050
XX	194	(k) (BkF)	207-08-9	0.050
XX	195	(FLT)	206-44-0	0.050
XX	196	(PHE)	85-01-8	0.050
XX	197	(PYR)	129-00-0	0.050
XXI	198	2,3,3,3- -2-() () (HFPO-DA)	-	0.050
XXI	199	2-	110-49-6	0.050
XXI	200	4- (PTBP)	98-54-4	0.050
XXI	201	(4-) (TNPP)(0.1% 4-)	-	0.050
XXII	202	2- -2- -4'-	119313-12-1	0.050
XXII	203	2- -1-(4-)-2- -1-	71868-10-5	0.050
XXII	204		71850-09-4	0.050
XXII	205		-	0.050
XXIII	206	1-	1072-63-5	0.050
XXIII	207	2-	693-98-1	0.050
XXIII	208		94-26-8	0.050
XXIII	209	() **	22673-19-4	0.050
XXIV	210		143-24-8	0.050
XXIV	211	() **	-	0.050
XXV	212	1,4-	123-91-1	0.050
XXV	213	(BMP); (TBNPA); 2,3- -1- (2,3-DBPA)	-	0.050
XXV	214		-	0.050
XXV	215	B	77-40-7	0.050
XXV	216		111-30-8	0.050
XXV	217	(MCCP)	-	0.050
XXV	218	*	13840-56-7	0.005
XXV	219	(PDDP)	-	0.050
XXVI	220	(±)-1,7,7- -3-[(4-)] [2.2.1] -2- / (4- MBC)	-	0.050
XXVI	221	2,2'- -(4- -6-) (DBMC)	119-47-1	0.050

(SVHC)

			CAS No.	RL (%)
XXVI	222	S-([5.2.1.0'2,6] -3- -8(9)-) O-(2-) O-(2-)	255881-94-8	0.050
XXVI	223	- (2-)	1067-53-4	0.050
XXVII	224	N-	924-42-5	0.050
XXVIII	225	1,2- (2,4,6-)	37853-59-1	0.050
XXVIII	226	A	79-94-7	0.050

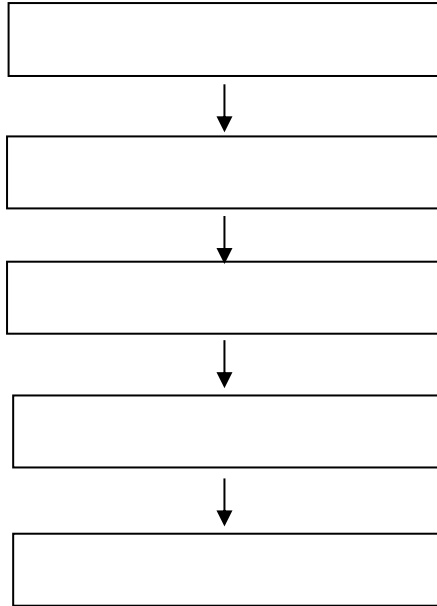
(SVHC)

CANEC24022808802

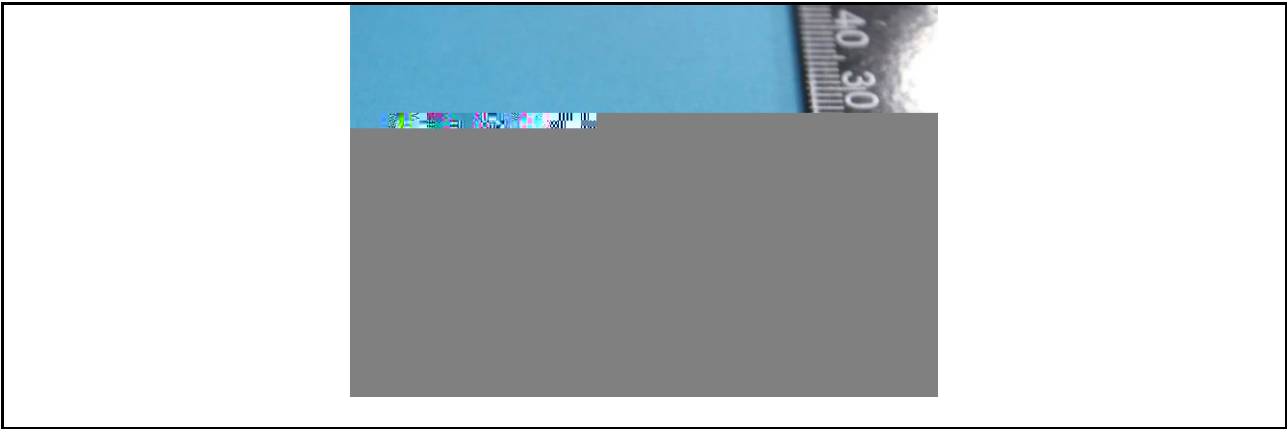
2024 10 23

13

14



(SVHC)



SGS
